



No-code, Low-code Solutions for Industrial IoT

State of the Solution

- **Demo**
Embedded java in IoTize Studio
Dashboard & Data Flow Editors in App Creator
In-app java in App Creator
AWS IoT & MQTT broker
- **Any IoTize Tap Product**
TapNLink and our PRIMER eval kit
Tapioca Modbus-Wireless Adapters
TapBus Industrial Modules
TapNPass Modbus-Wireless tools



- **Today's Topic**
No-code & Low-code Solution for Monitoring Apps
- **Solution**
Where did IoTize start and what do we provide
- **Software Tools**
IoTize full software ecosystem for No-code / Low-code
- **JVM & Java in Configuration**
Demo: a no-code Tap configuration, a low-code Tap configuration
- **App Creator**
Dashboard editor and no-code
Data Flow editor, nodes and low-code



Data Logging vs Monitoring



Data Logging

- Storing data to a remote platform
- Permanent connection (WAN, LPWAN, GSM)
- Data is persistent
- For data analysis to guide future actions



Monitoring

- Storing data to a remote platform
- On-site, direct device connection
- Temporary connection & data (NFC, BLE, Wi-Fi)
- Commissioning, Testing, Maintenance, User Control

Data Logging vs Monitoring



Data Logging

- *Storing data to a remote platform*
- *Permanent connection (WAN, LPWAN, GSM)*
- *Data is persistent*
- *For data analysis to guide future actions*



Monitoring

- *Storing data to a remote platform*
- *On-site, direct device connection*
- *Temporary connection & data (NFC, BLE, Wi-Fi)*
- *Commissioning, Testing, Maintenance, User Control*



Founder: Francis Lamotte
Offices: Grenoble, France

Embedded Electronics

- Microcontrollers
- Embedded Software
- C, C++, Java

Wireless

- Near Field Communication
- Bluetooth, Wi-Fi, LoRa, ...

Mobiles & Cloud

- Cordova, Ionic
- Android, iOS, Windows
- MQTT, CoAP
- AWS, Bluemix, Watson, ...

IoT Security

- Encryption
- Authentication



Customers

Appliance

HVAC

Energy

Automation



They iotize...



Heating Appliances



Energy & Automation



Industrial Monitoring



The Race to Connect Industry

Customer Expectations
New Efficiency
New Services & Business



Customer Challenges

- New Technology
- Increased Complexity
- Lack of Expertise
- Lack of Resources

Target Customers



OEM of Industrial Devices

Customer Challenges

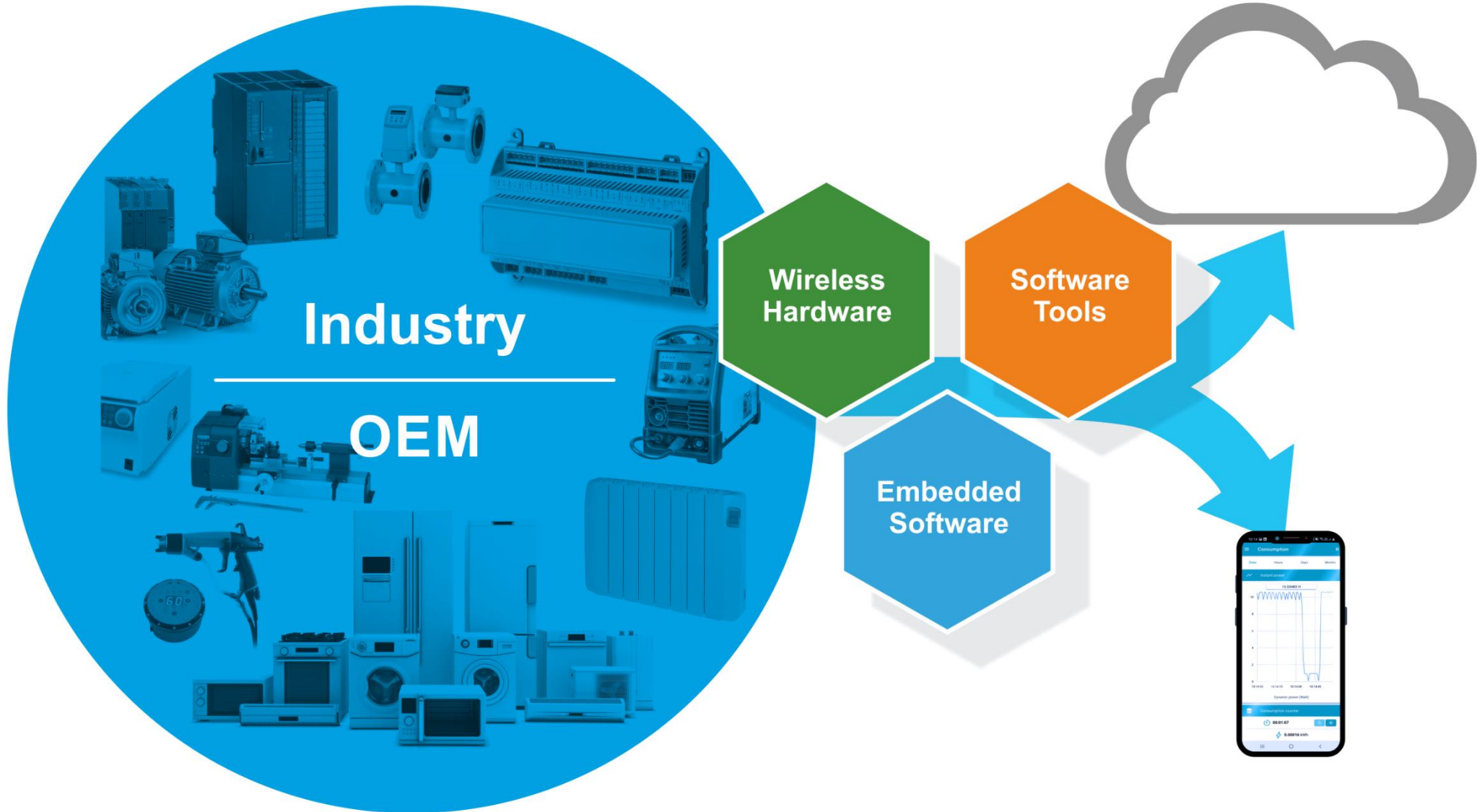
- New Technology
- Increased Complexity
- Lack of Expertise
- Lack of Resources

Target Customer Shift

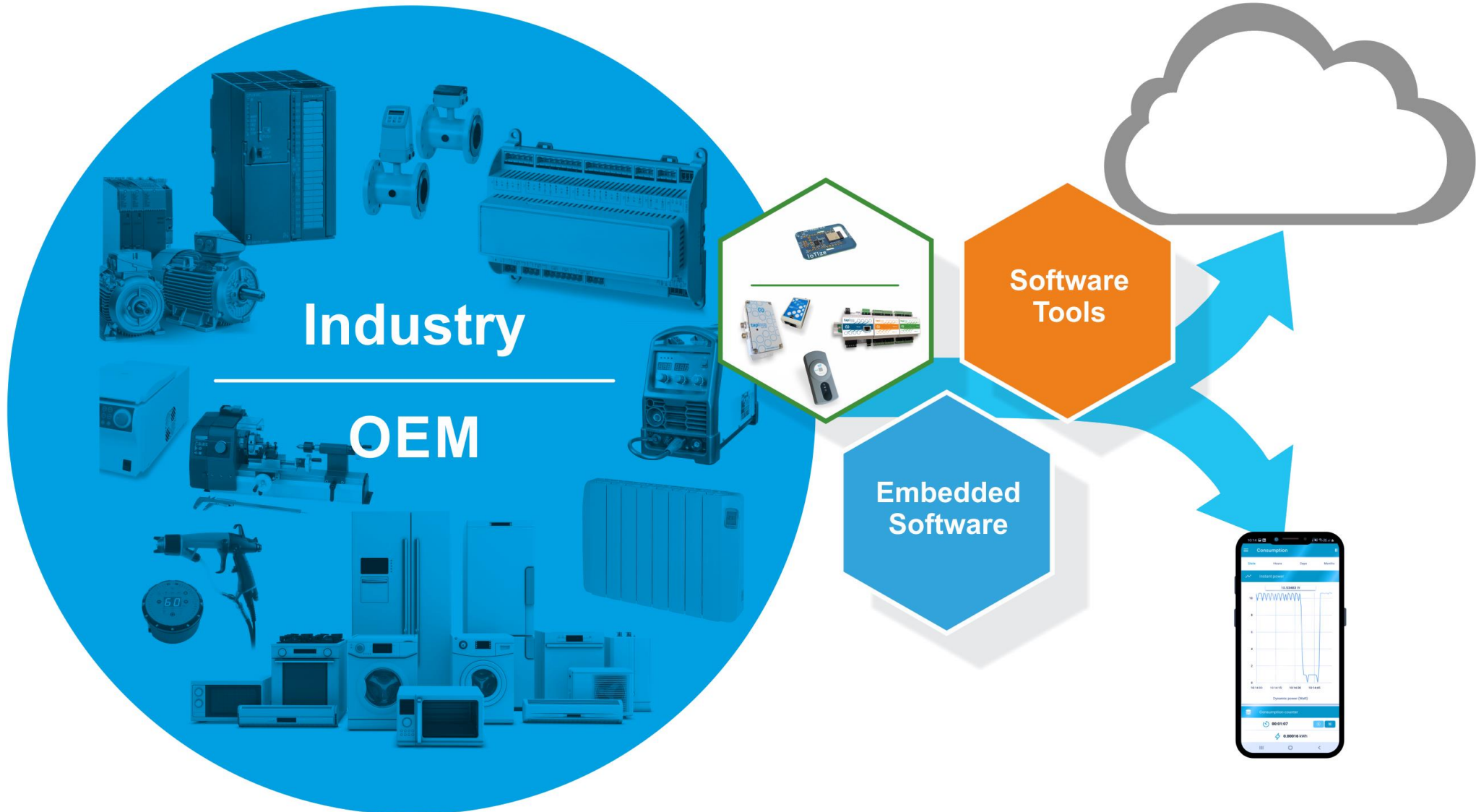


Integrators
Owners
Service Companies

OEM of Industrial Devices

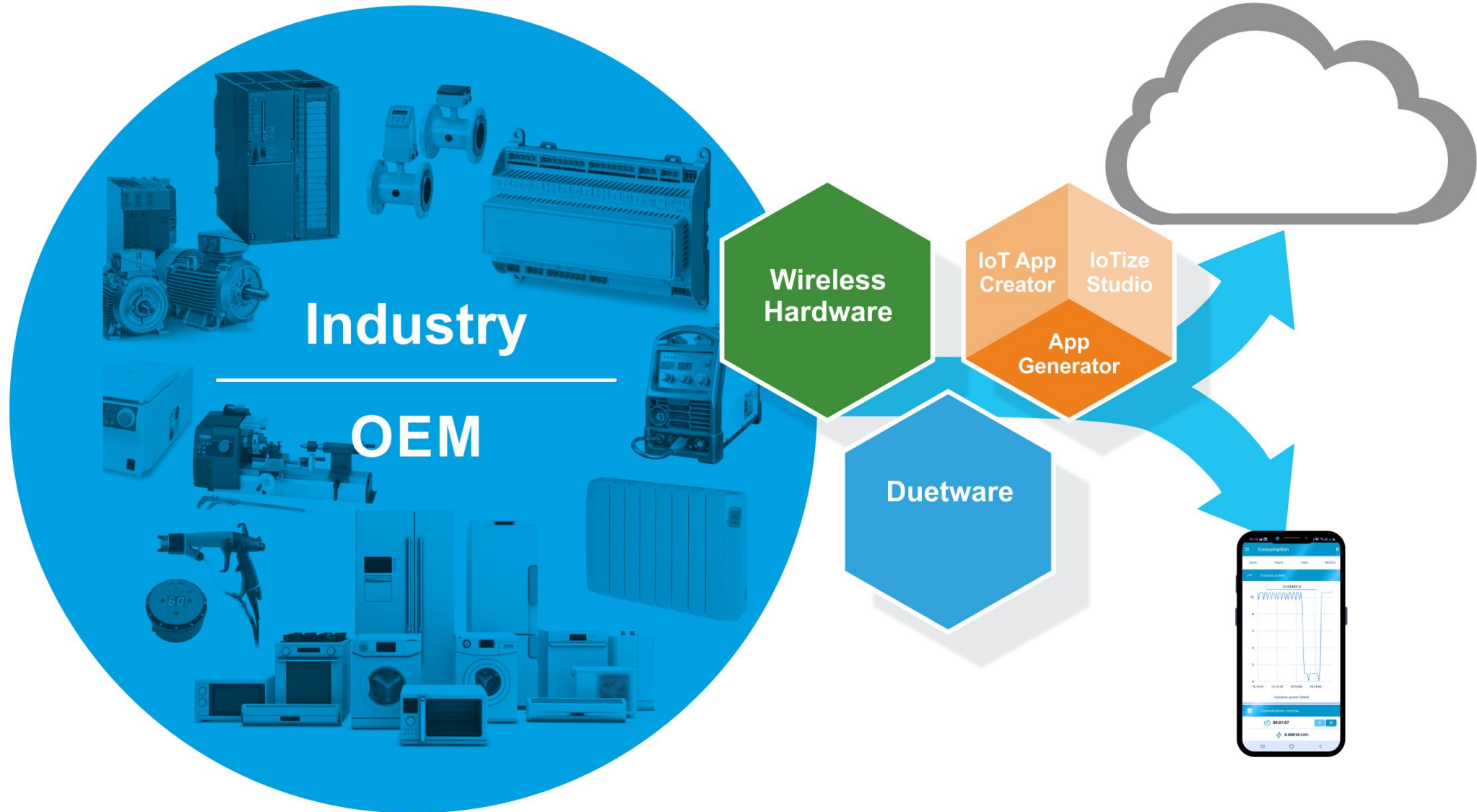


Hardware is Important, Tangible

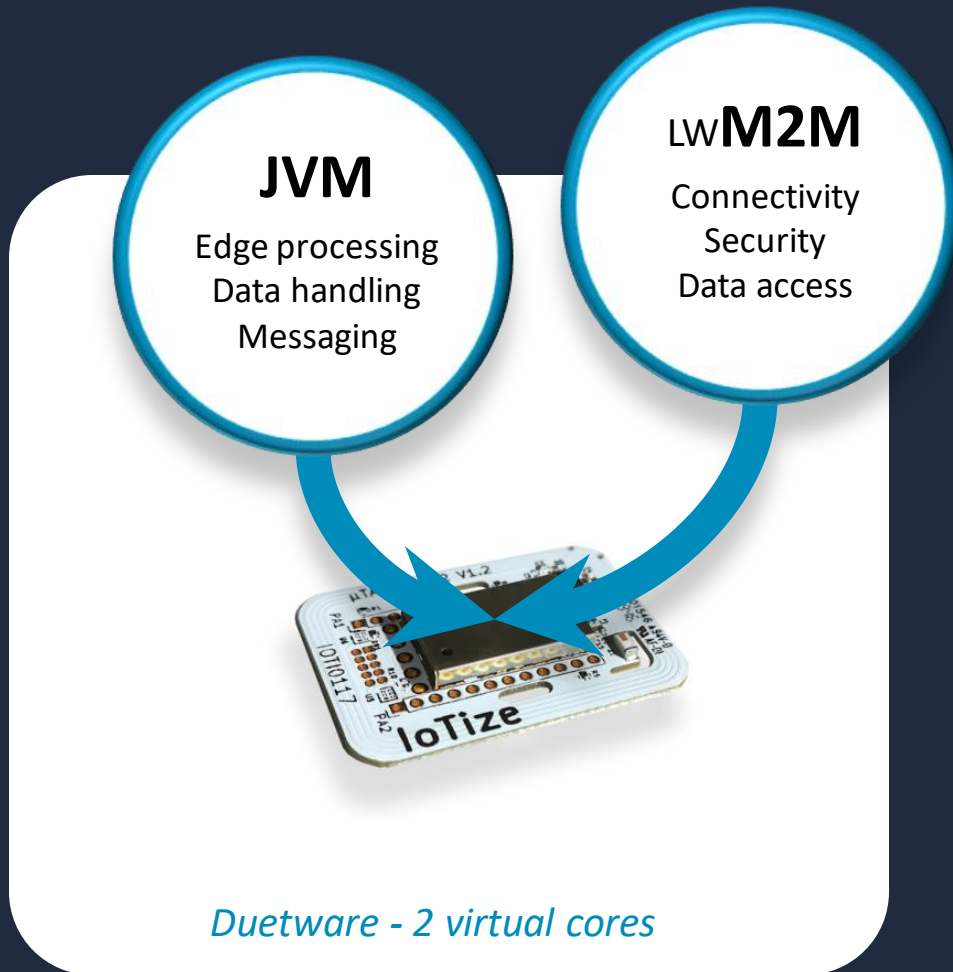




No-Code, Low-Code Advantage is Software



Duetware Embeds Intelligence for No-Code / Low-Code Integration

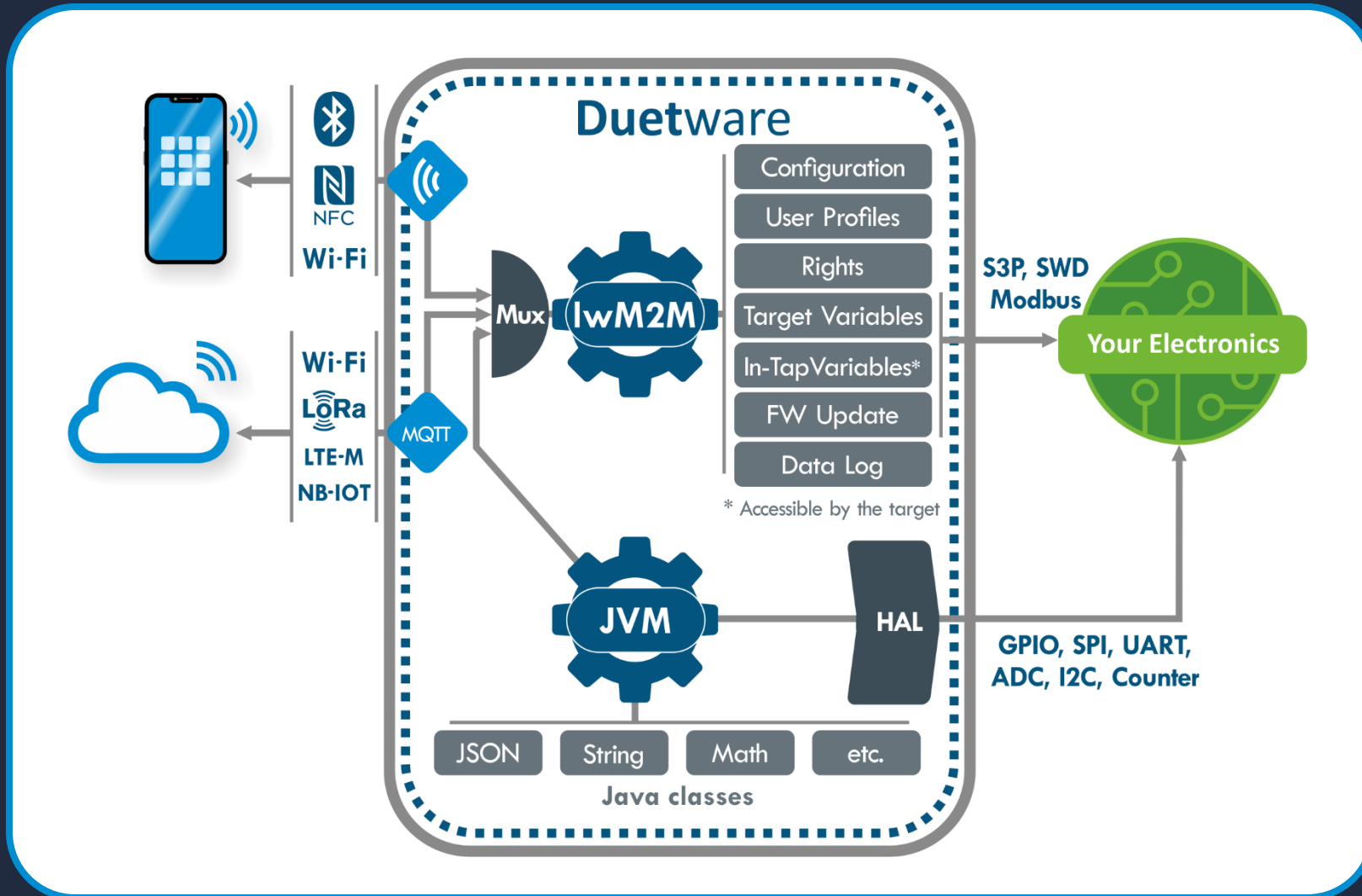


Duetware for...

- *No-Code communication, security, data handling*
- *Low-Code for customization with java*

Advantages for Customers...

- *No expertise*
- *Customizes easily*
- *Reduces project effort & complexity*
- *Improves design flexibility*



lwM2M engine

- *Retrofit with secure communication*
- *Instant PoC*

Java Virtual Machine

- *Edge processing*
- *Drive components*
- *Connect to any Cloud*

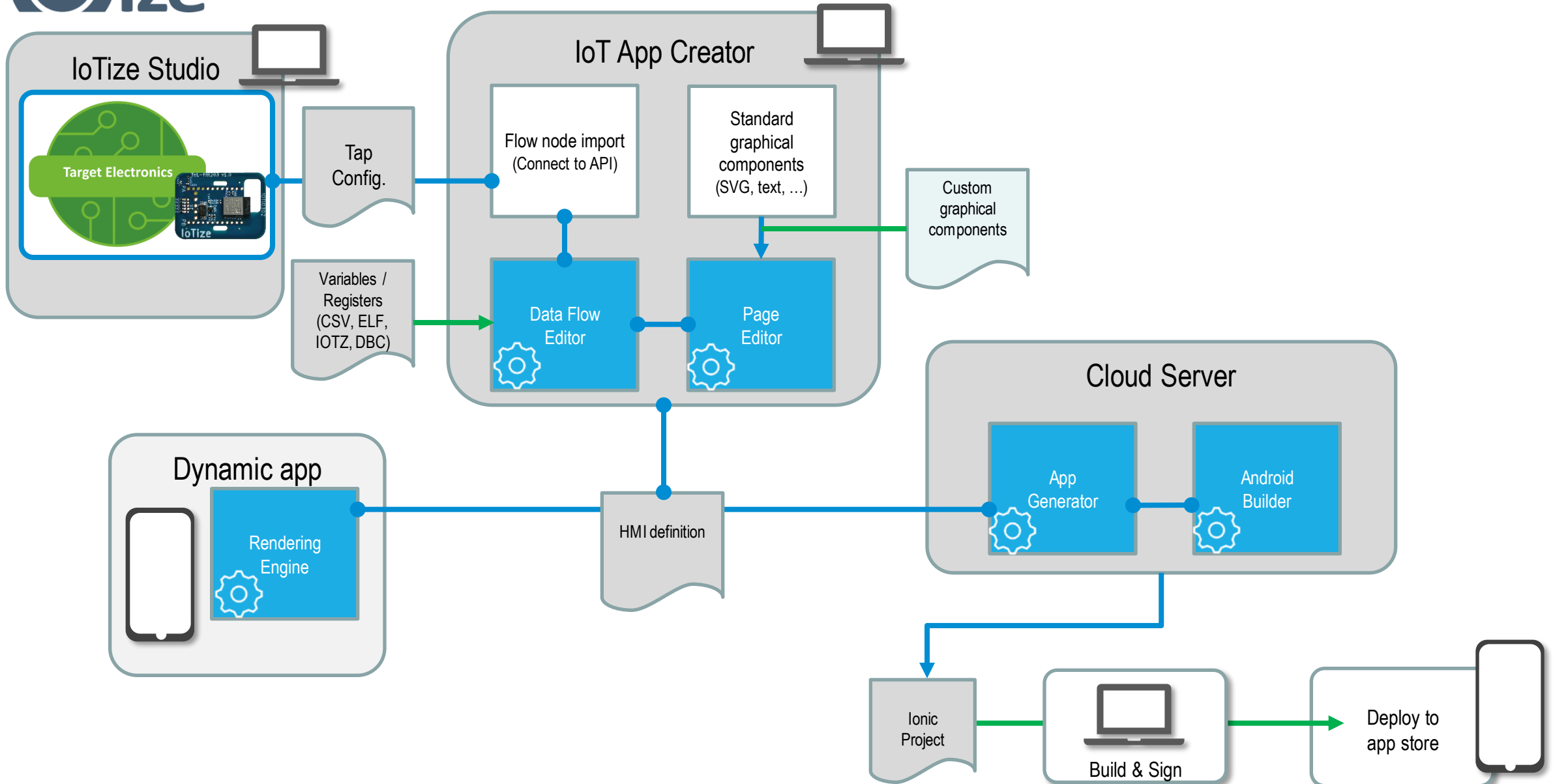


Duetware Solution Features, Tools & Resources

Design Aids	Configuration Wizards Dashboard, MQTT, AWS cloud In Tap Manager	Java samples AES, I2C, MQTT, ADC, PWM, UART, SPI In IoTize Studio	Configuration samples STM32 (SWD), STM32 (S3P), Arduino (S3P), SPI, Modbus Sensor, SPI Sensor In IoTize Studio	Dashboard samples Sensor, Wattmeter, Chart, Check list, Table, Dynamic HTML, Cryptography In IoT App Creator	Reference designs CO2 meter, Switch timer, Access entry code, Thermostat, Wattmeter support.iotize.com
	Tap Toolbox Fieldbus connection utilities & testing Android & iOS Free App Store Play Store	Tap Manager No-code Tap configuration Android, iOS & Web app (PC) Free App Store Play Store iotize-cloud.web.app	IoTize Studio No/Low-code Tap configuration Windows (PC) Free iotize.com	IoT App Creator No/Low-code dashboard design Web app (PC) Subscription iotize-cloud.web.app	Ride7 / RKit-JVM Java code debugger Windows (PC) Free raisonance.com
DUETWARE	NFC 3-Stroke Configuration Secure pairing (BLE, Wi-Fi)	Bluetooth (BLE) Device-to-mobile comm.	Wi-Fi Device-to-mobile comm. WAN	LoRa Module or Tapioca HW extension	LTE & NB-IOT Tapioca HW extension
	lwM2M	JVM	SCRAM	SSL	MQTT
	FUOTA	JSON	Access profile management	Certificate management	CoAP
	SWD	SPI	USB	Modbus RTU / TCP	TCP / IP
	S3P	I2C	RS232	RS485	Ethernet
	UART	GPIO	CAN		
Board Support & Evaluation	For Cortex M MCU SWD & S3P Library TapNLink PRIMER	For Arduino Ard-Tap Library (S3P) TapNLink PRIMER	For Other MCU S3P Library TapNLink PRIMER	For Modbus devices / systems Native Modbus RTU & TCP Tapioca TapNPass TapBus	www.iotize.com
	<i>IoTize is a patented technology of IoTize SAS. Patent No. 14/54445.</i>				



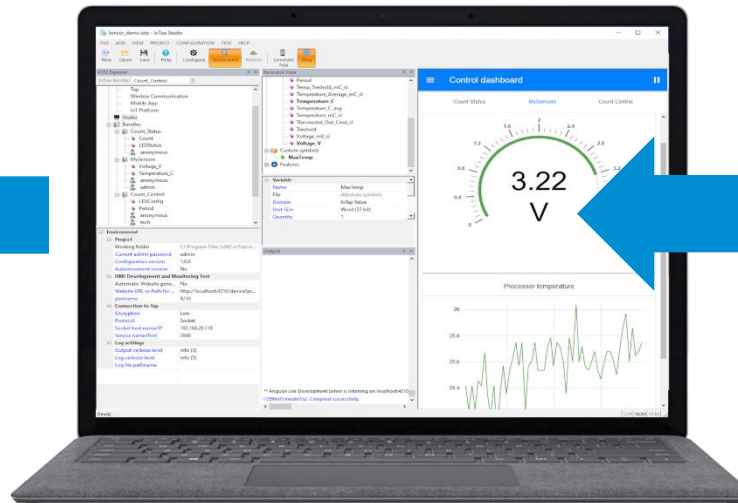
Monitoring App Creation Workflow



Duetware Embedded

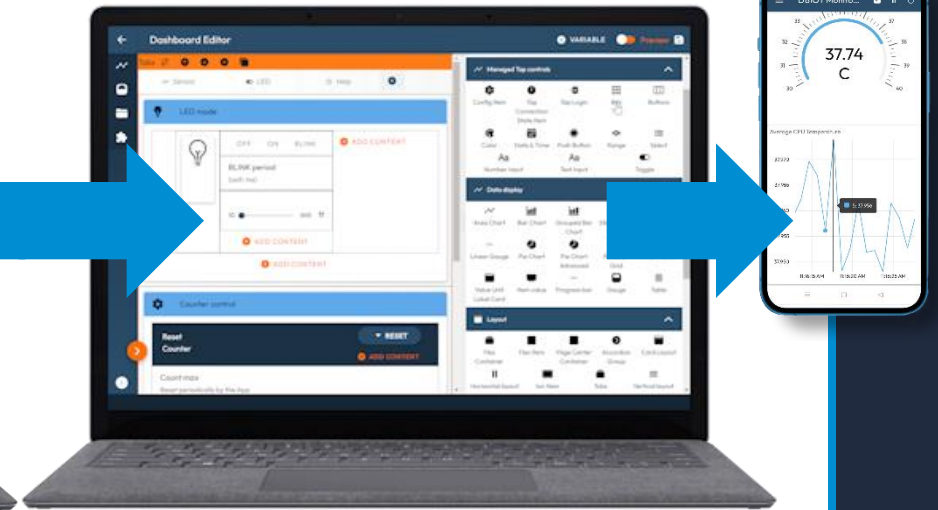


IoTize Studio



Duetware Feature Configuration for Data Communication

IoT App Creator

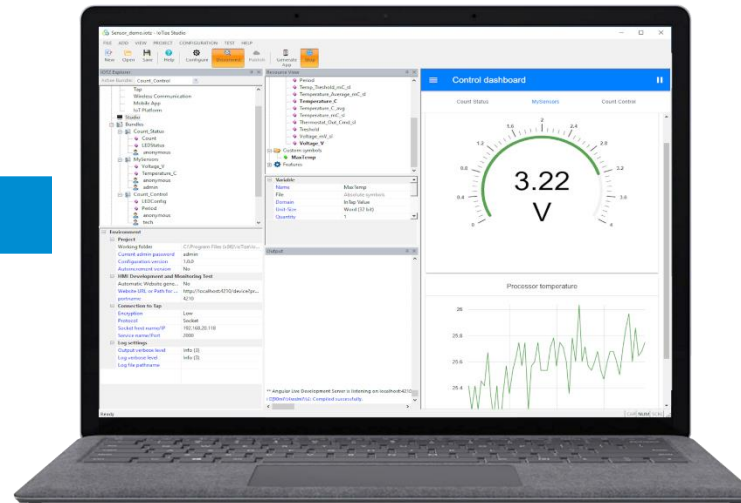


HMI Creation to Exploit Your Data

Duetware Embedded

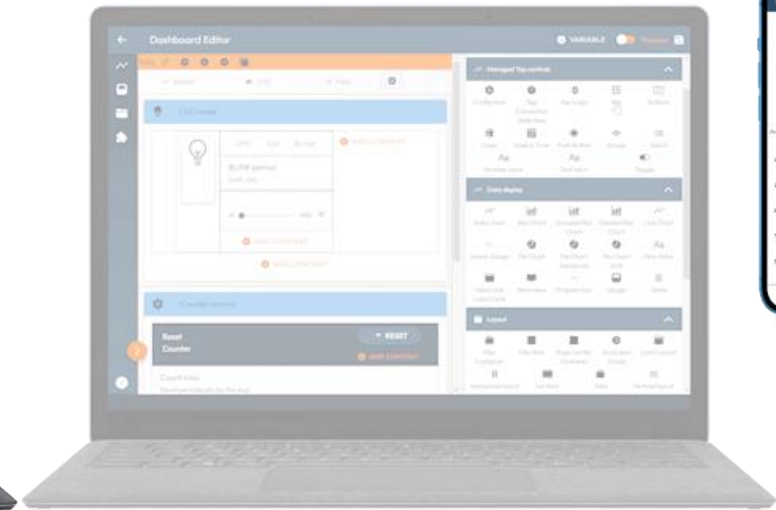


IoTize Studio

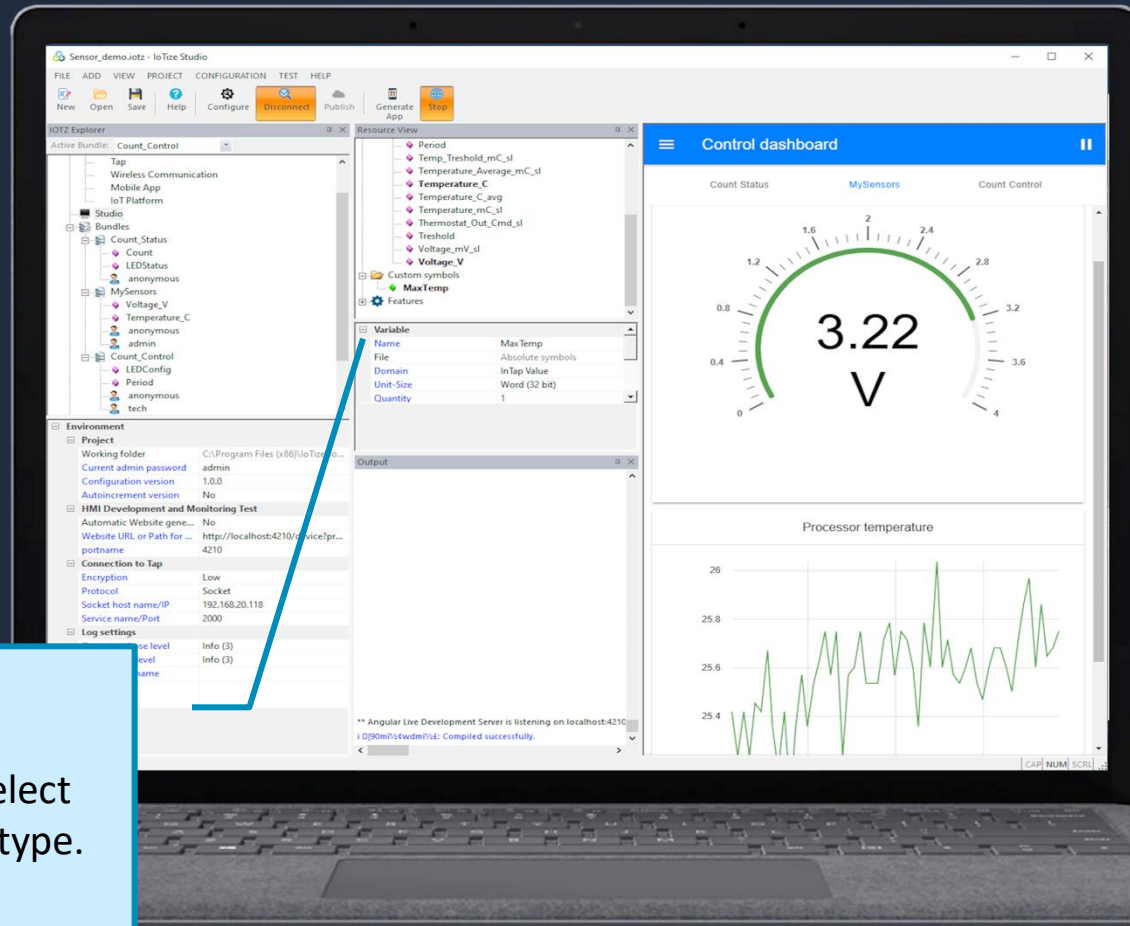


Duetware Feature Configuration
for Data Communication

IoT App Creator



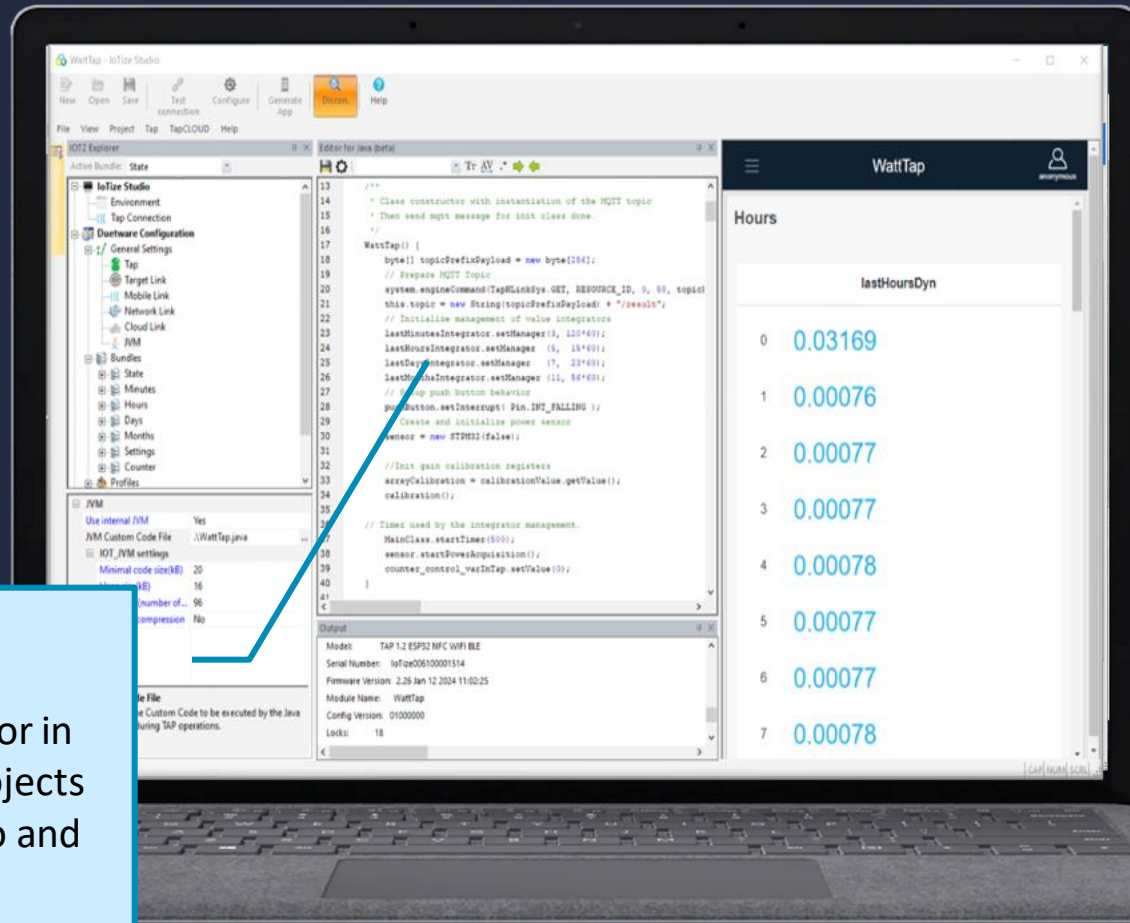
HMI Creation to Exploit Your Data



Create Configuration
Drag'n drop variables, and select options for access rights and type.

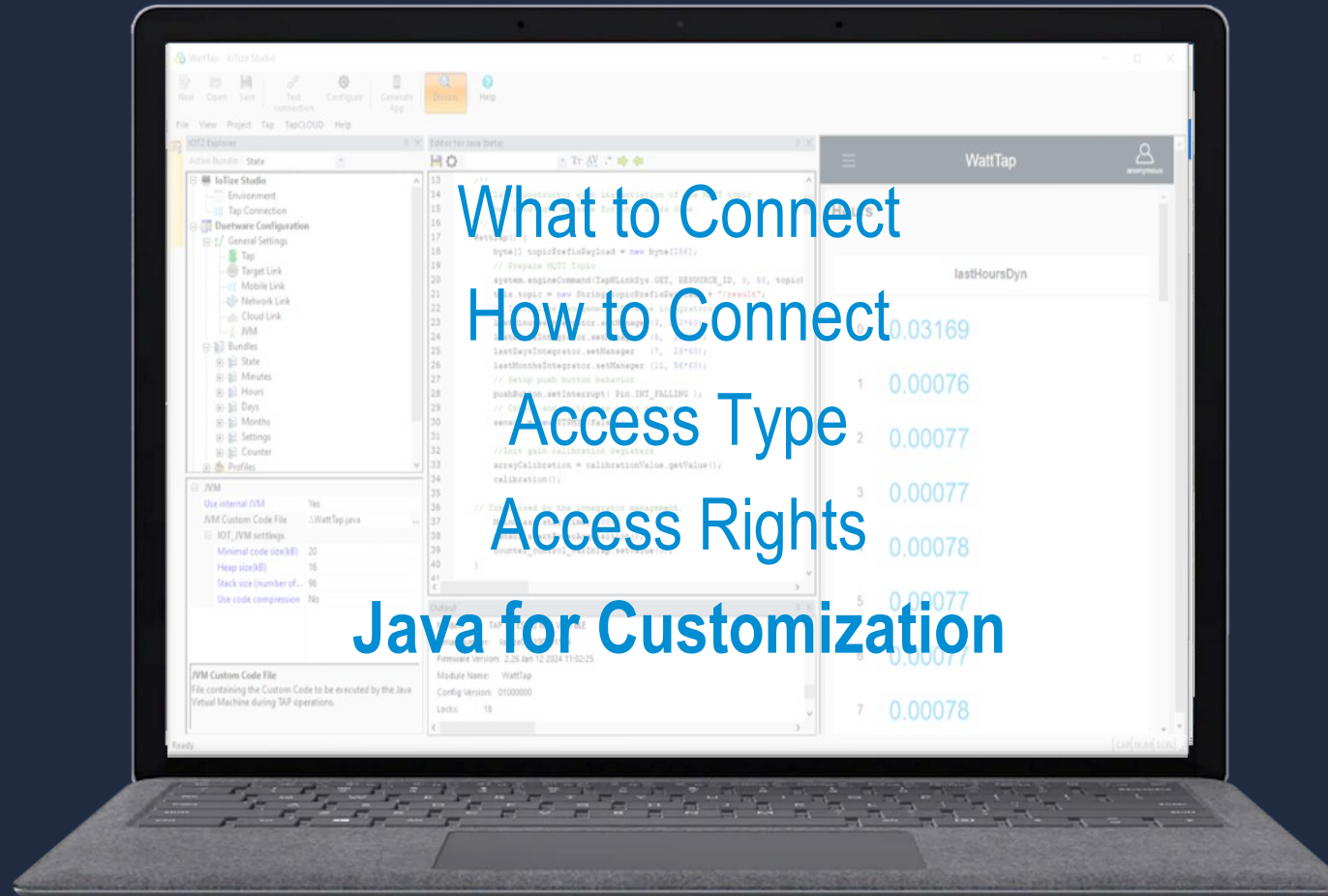


What to Connect
How to Connect
Access Type
Access Rights

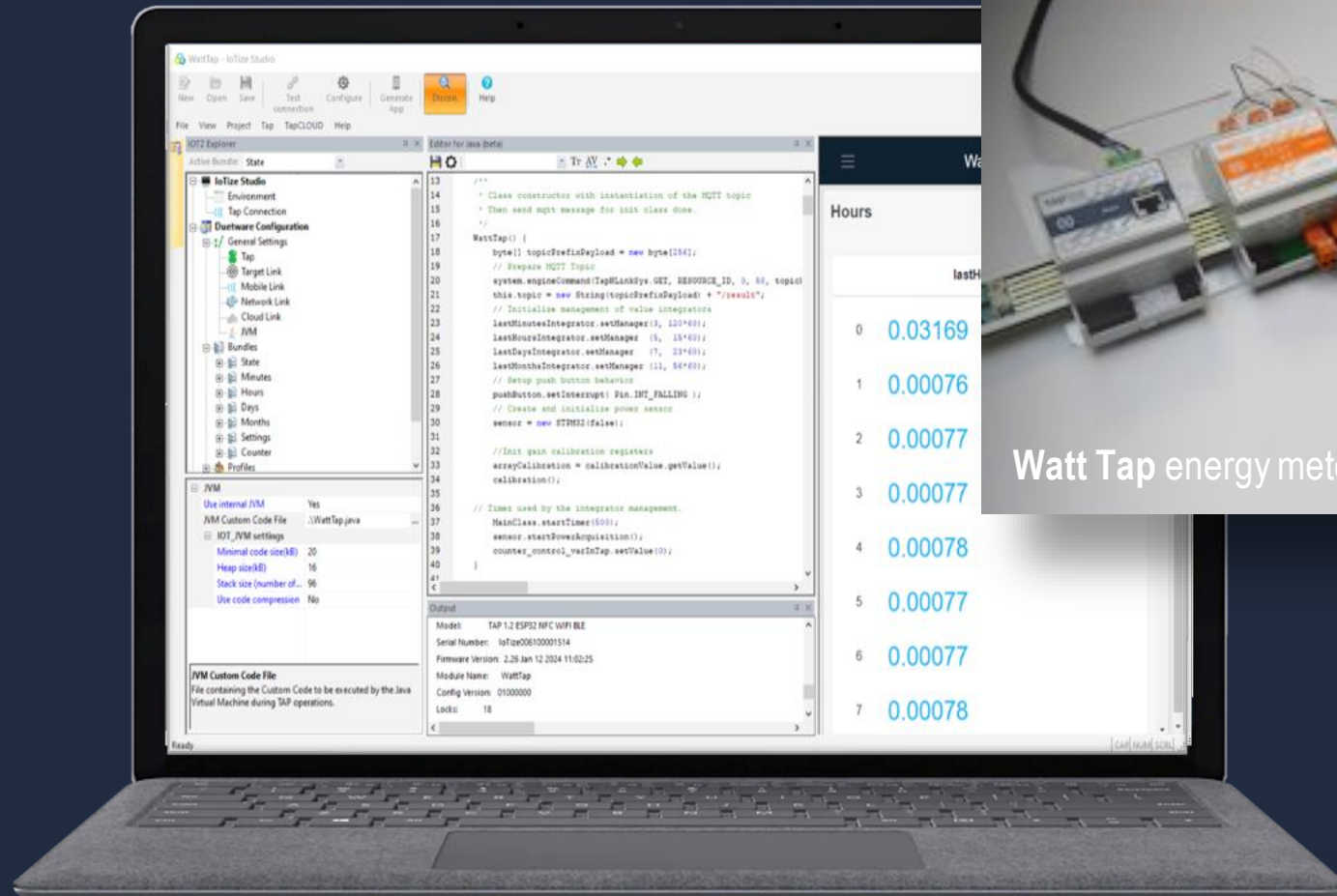


Embedded JVM

Add java file using Code Editor in IoTize Studio. We provide projects and examples in IoTize Studio and on support.iotize.com



What to Connect
How to Connect
Access Type
Access Rights
Java for Customization



Watt Tap energy meter example

The image displays the IoTize development environment on a laptop and a mobile dashboard. The IDE interface includes a file explorer, a code editor with Java code for the `WattTap` class, and a console window. The code includes comments and logic for MQTT topic management, sensor calibration, and push button behavior. The console output shows device details like model, serial number, and firmware version.

Hours	Watt
0	0.03169
1	0.00076
2	0.00077
3	0.00077
4	0.00078
5	0.00077
6	0.00077
7	0.00078

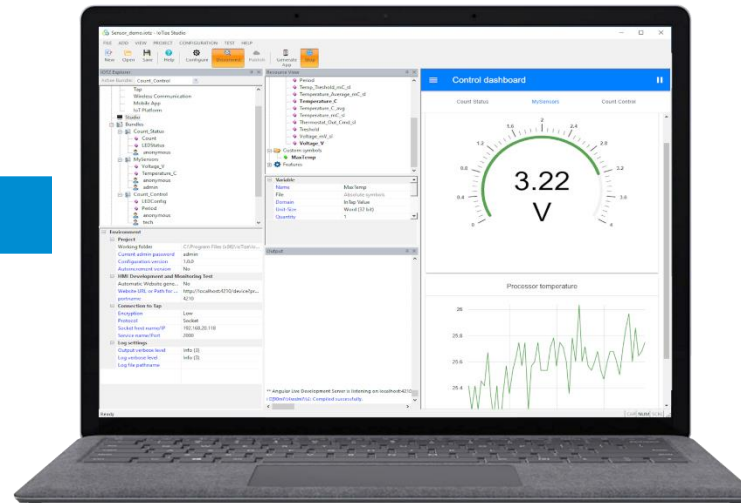
The mobile dashboard, titled "Dashboard Editor", features a "History" section with a bar chart showing energy usage in Watts over time. The chart has a y-axis labeled "Watt" ranging from 0 to 80. A sidebar menu includes options like "Back to home", "Dashboard engine", "Data Flow Editor", and "Resource files".

Watt Tap energy meter example

Duetware Embedded

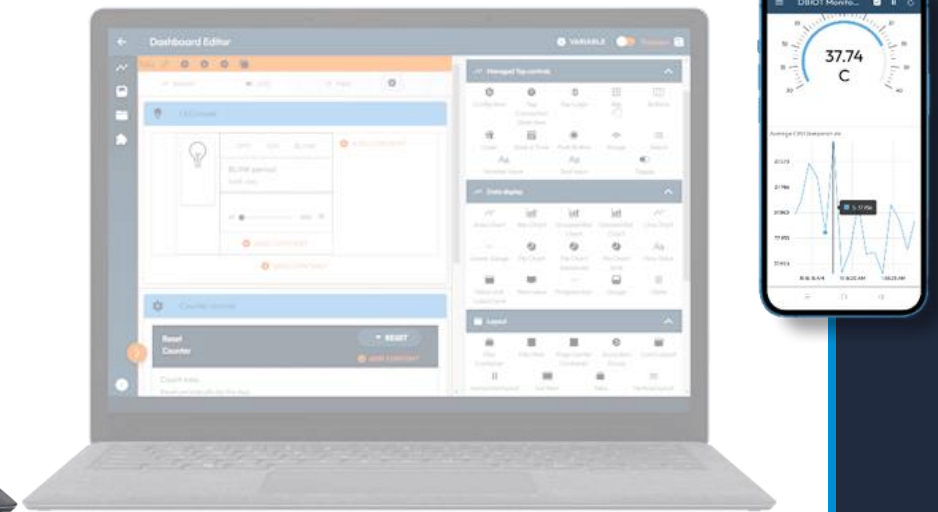


IoTize Studio



Duetware Feature Configuration
for Data Communication

IoT App Creator

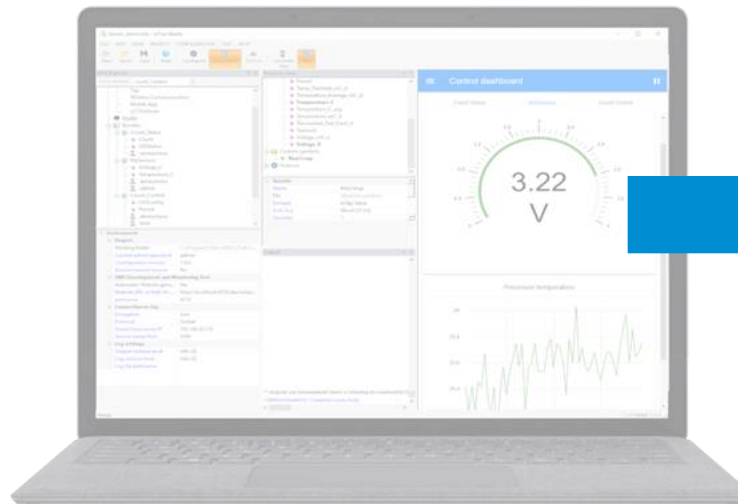


HMI Creation to Exploit Your Data

Duetware Embedded

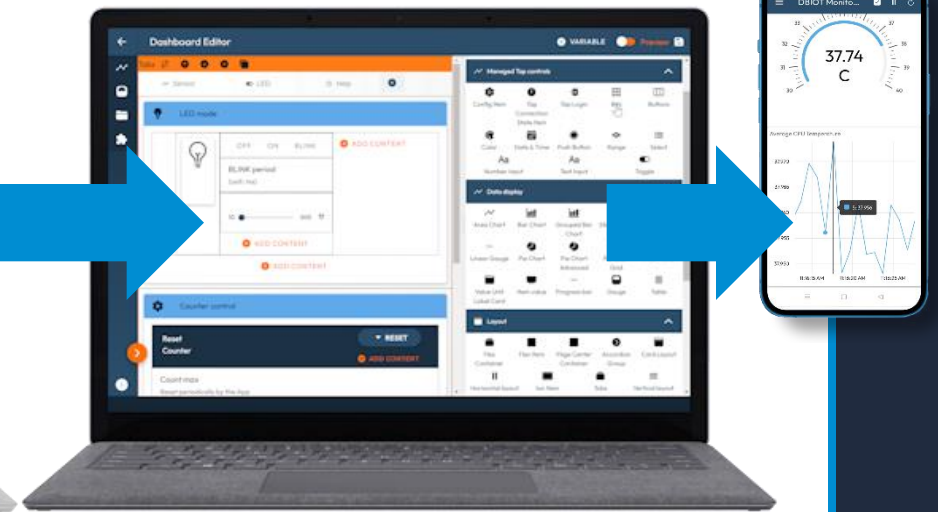


IoTize Studio



Duetware Feature Configuration for Data Communication

IoT App Creator



HMI Creation to Exploit Your Data



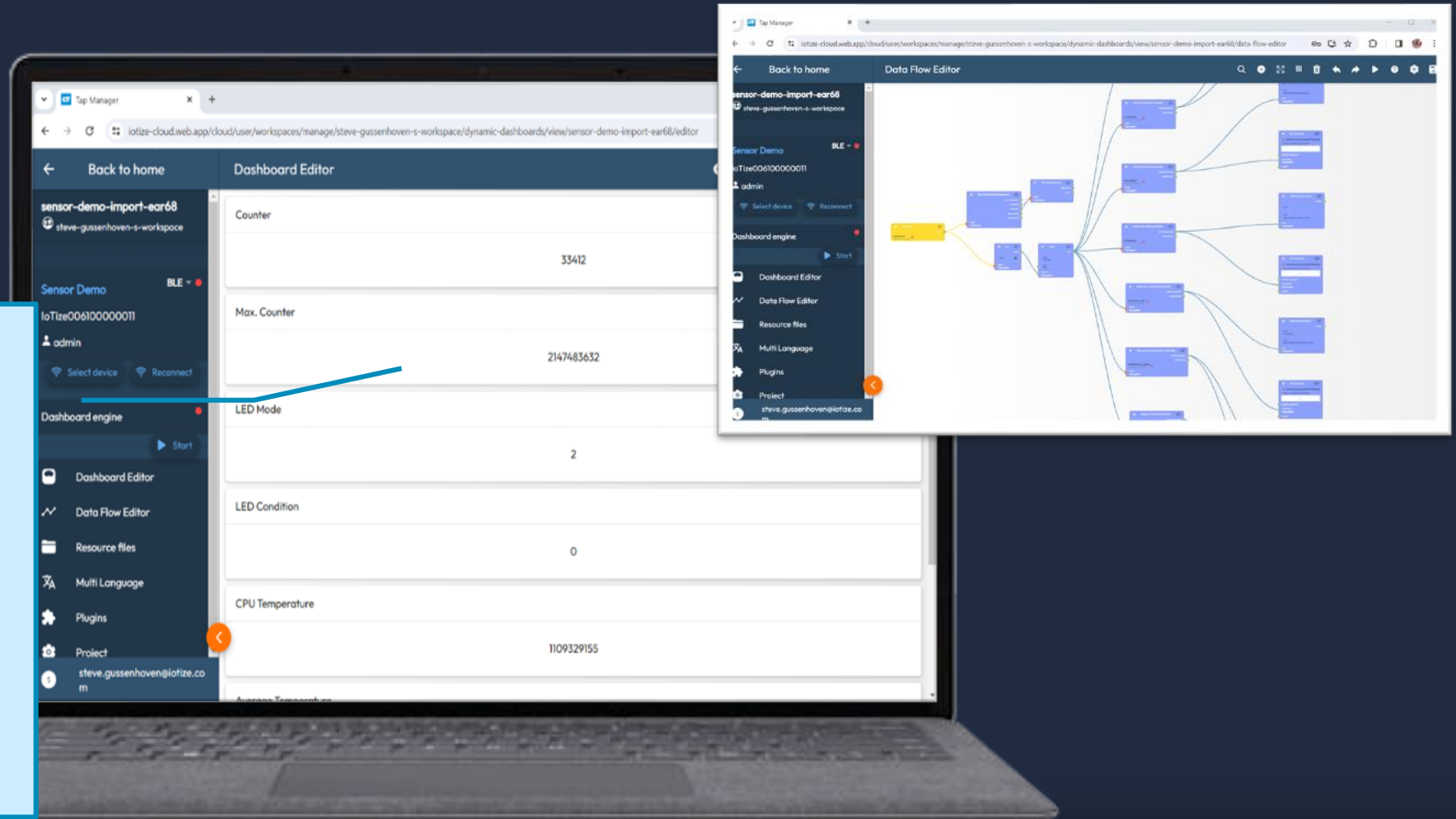
Drag & Drop, WYSIWYG Environment

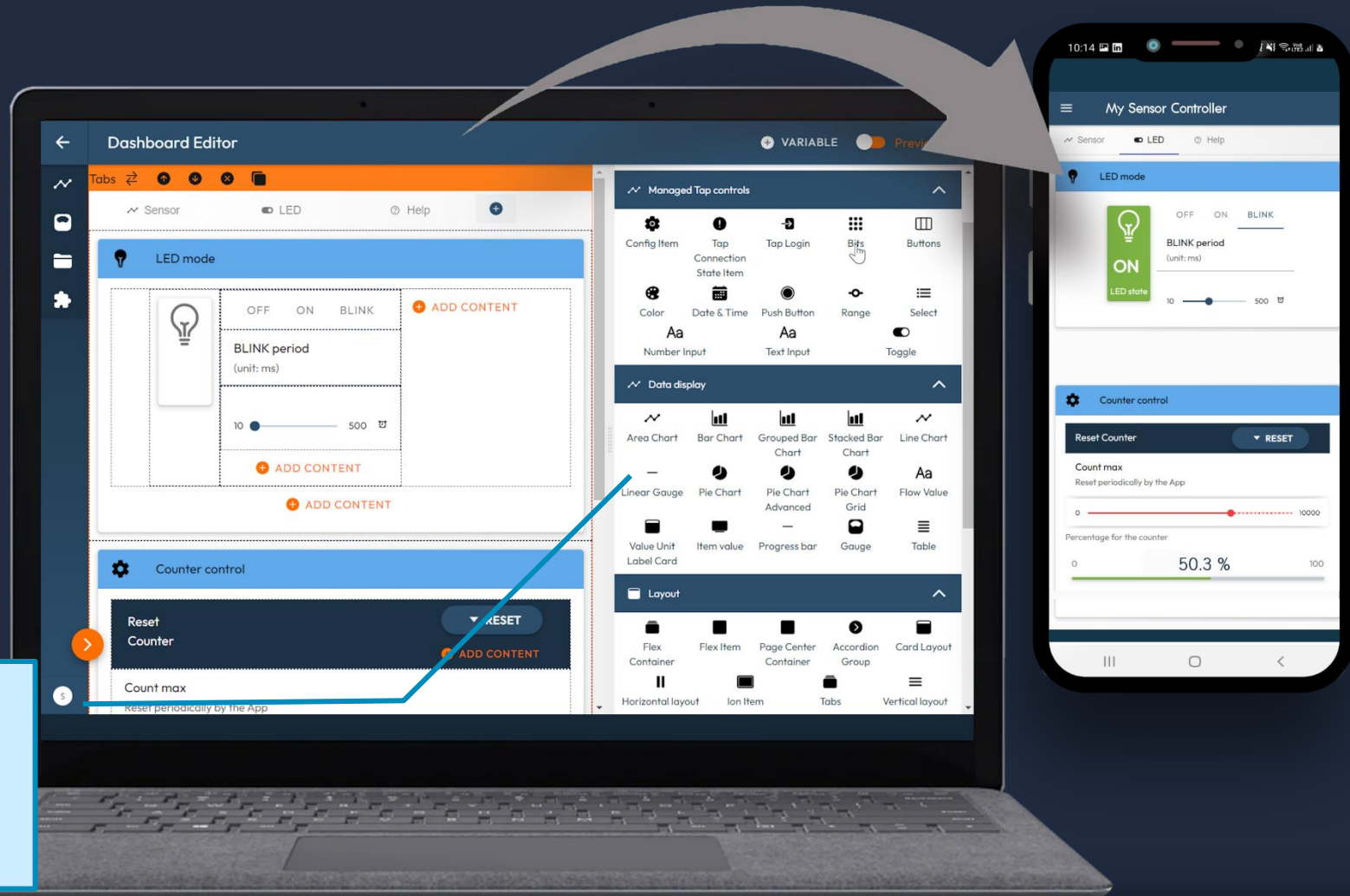


www.iotize.com

Dashboard displays variables as text or with graphical component that may have been set in Studio.

Data Flow editor is populated and updated automatically while you work in Dashboard editor.





Configure Dashboard
Drag'n drop, and click to set display options

The image displays the IoTize web interface for dashboard management. The top section shows the 'Dashboard Editor' for a 'Sensor' dashboard. The main display area shows a 'Temperature' gauge with a value of 30.3 °C. Below this is a 'Real time evolution' line chart showing 'Temperature and voltage' over time. The chart has a y-axis from 0 to 60 and a legend for 'Voltage' (blue) and 'Temperature' (purple). A yellow box highlights the 'Real time evolution' chart in the dashboard editor. To the right, a 'Data Flow Editor' diagram shows the data processing pipeline. It starts with two 'TopLink value extractor' nodes (blue) that extract 'voltage' and 'temperature' from a data source. These are then processed by a 'Multi series chart' node (yellow) which outputs 'Voltage' and 'Temperature'. Finally, the data is displayed in two 'G2D Component' nodes (blue) as gauges showing '3.30 V' and '32.6 °C'. A 'G2D Component' node (blue) also displays a 'Line Chart' for the 'Temperature' data.

Tap Manager

iotize-cloud.web.app/cloud/user/workspaces/manage/steve-gussenhoven-s-workspace/dynamic-dashboards/view/watttap

Back to home

Dashboard Editor

watttap-e420b

steve-gussenhoven-s-workspace

WattTap

loTize006100001514

anonymous

Disconnect Login

Dashboard engine

Advanced settings

Login is mandatory to access the advanced settings

LOGIN

Dashboard Editor

Data Flow Editor

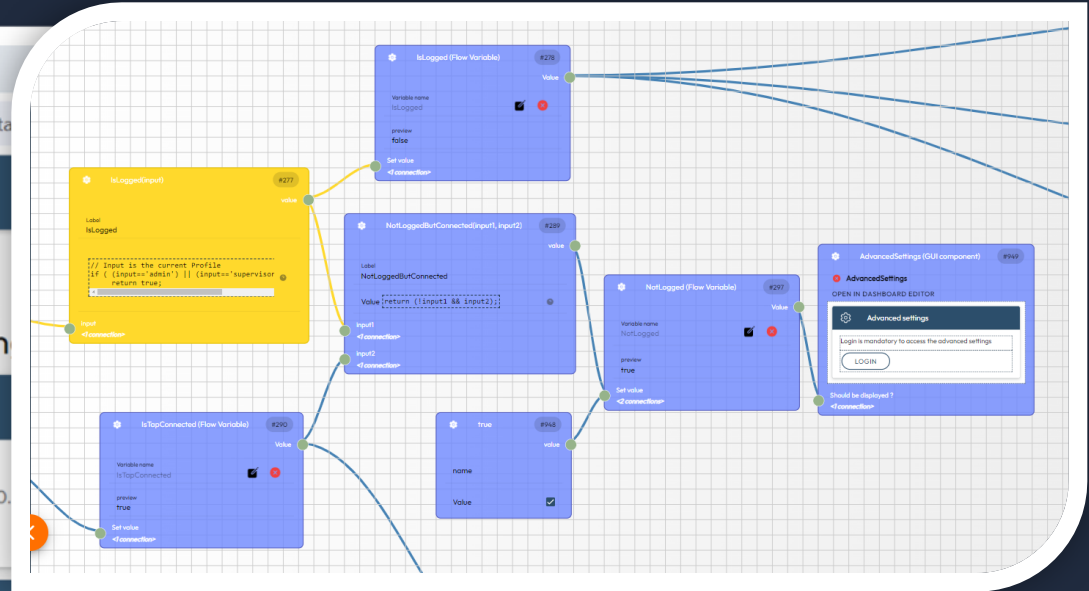
Resource files

Multi Language

Plugins

Project

steve.gussenhoven@iotize.com



Code editor

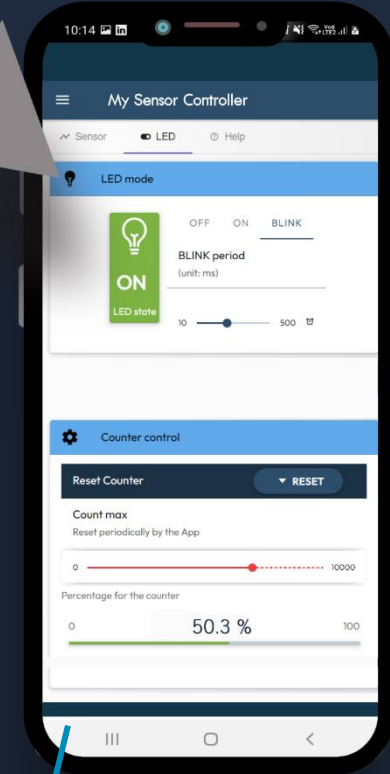
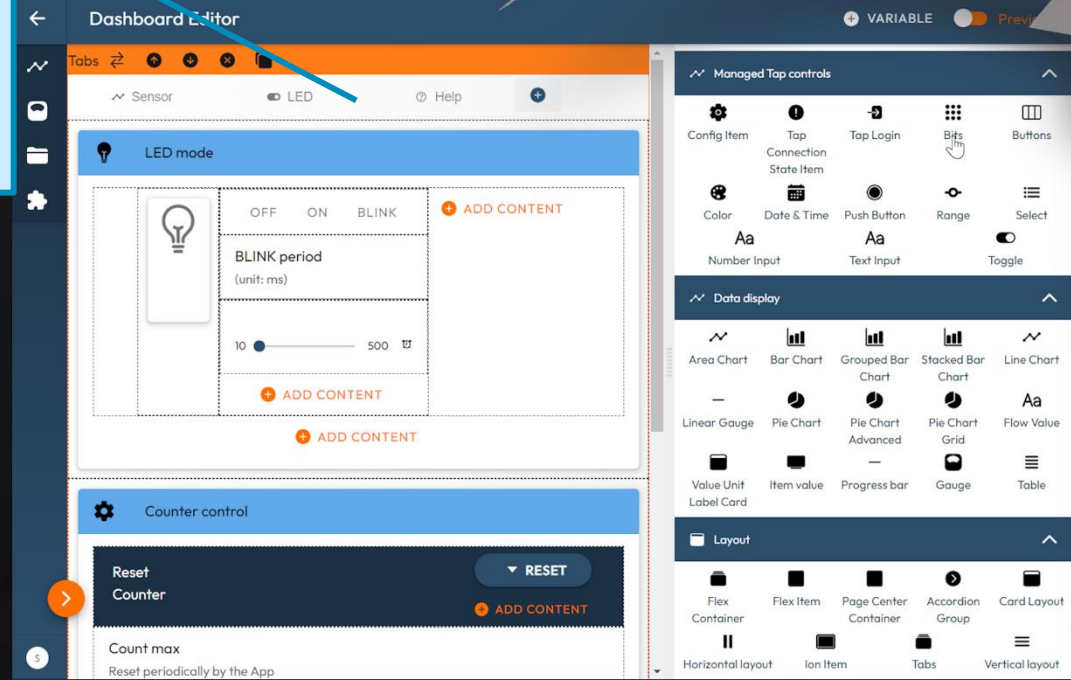
```

1 // Input is the current Profile
2 if ( (input=='admin') || (input=='supervisor') || (input=='operator') ) {
3   | return true;
4 }
5 else return false;

```

Test in Preview

Use your dashboard on the PC or directly on your mobile.



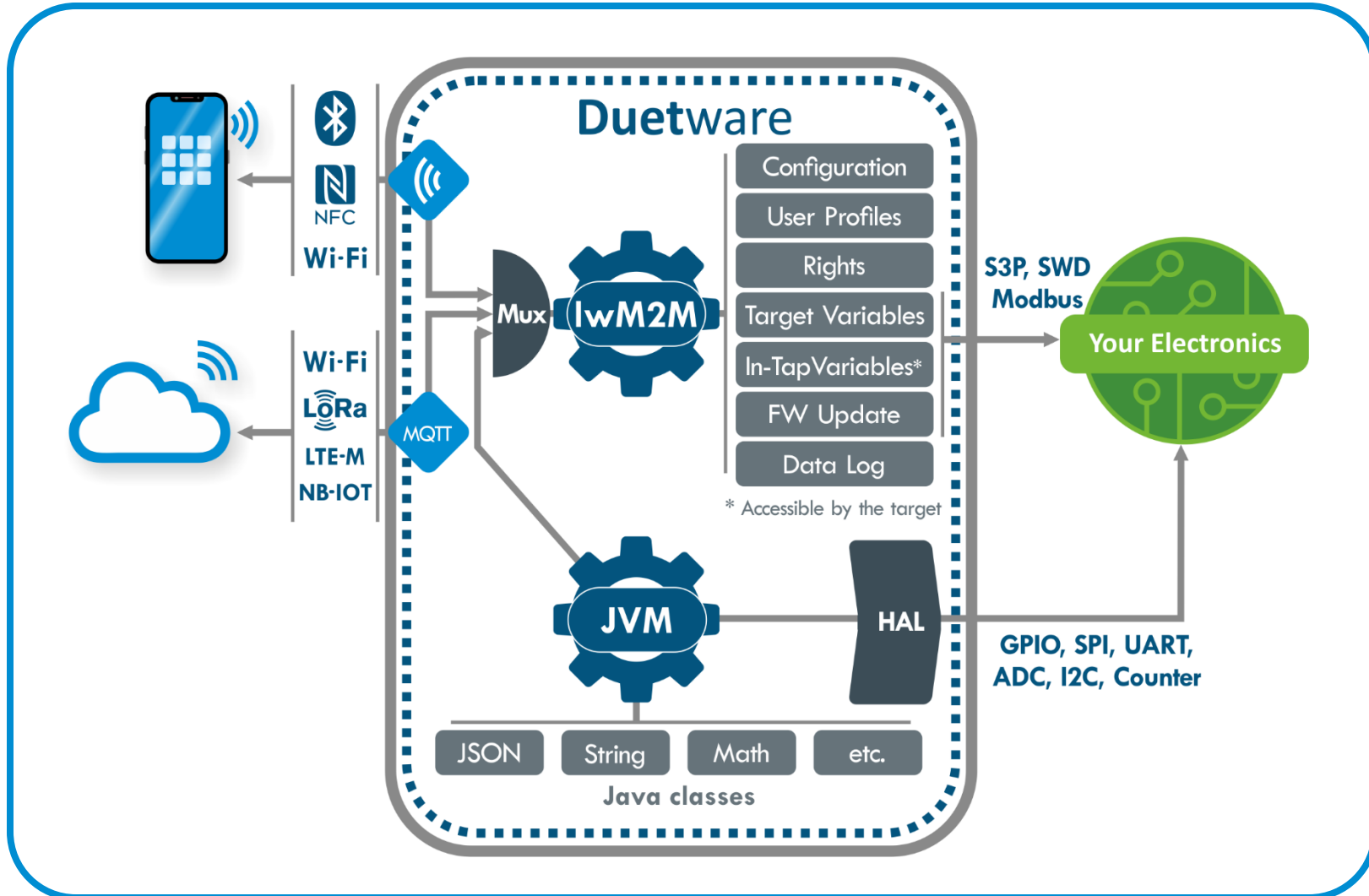
Test on Mobiles

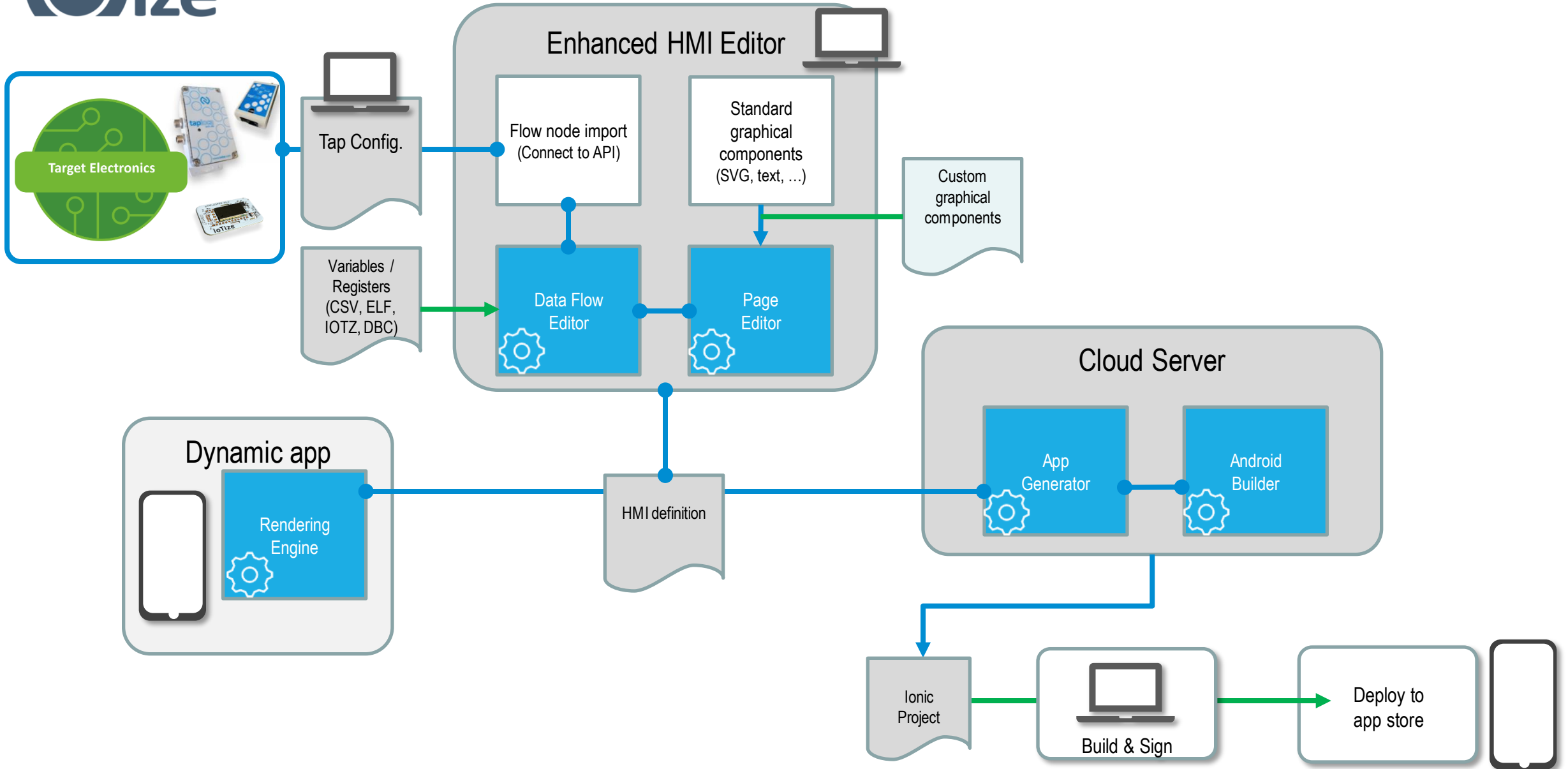
Dashboard is available for tests without compiling final app.



Concluding Points

The Common Core of All Our Products





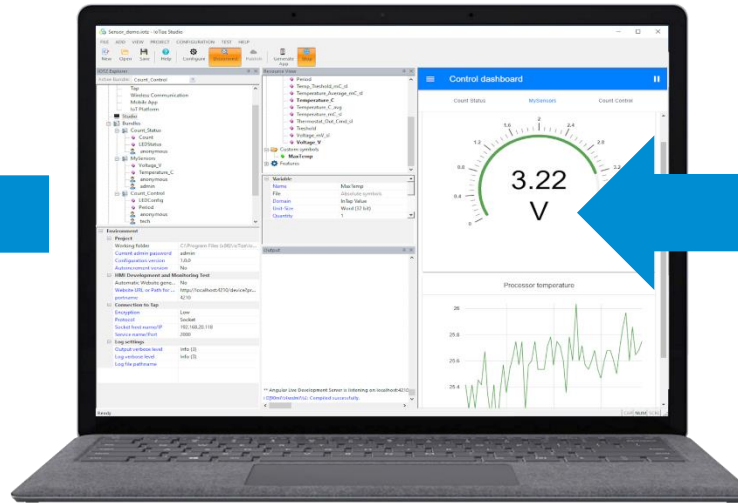


Unified No-Code / Low-Code Tool Ecosystem

Duetware Embedded

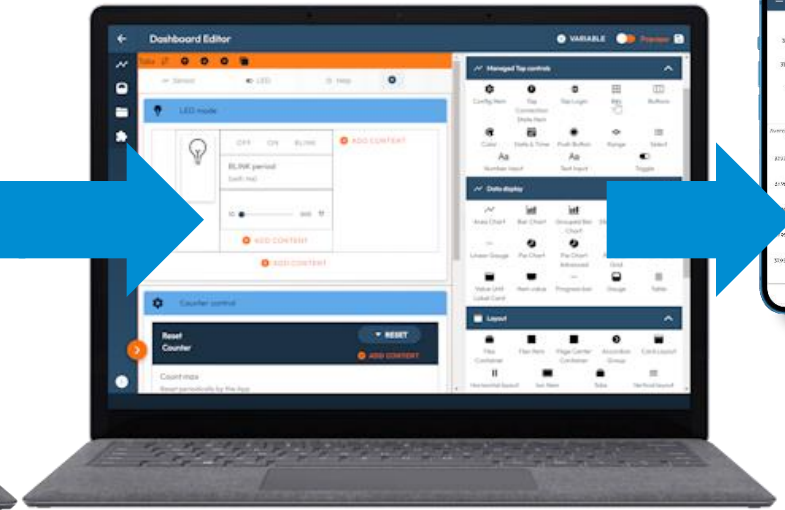


IoTize Studio



Duetware Feature Configuration for Data Communication

IoT App Creator



HMI Creation to Exploit Your Data





Resources

- **Tool video**

Introduces our tools and no-code / low-code approach. Also on IoTize YouTube channel. Follow us.

- **Solution catalog**

Introduces our tools and no-code / low-code approach. Share this link. PDF format.

- **IoTize Studio**

Free Windows-based configuration software for all our HW products. Includes sample projects. User manual.

- **IoT App Creator**

Just create your IoTize Cloud account. Includes samples of dashboards that you saw here. Free access to dashboard editing and testing for user of any IoTize hardware products.

- **Sample Applications**

Complete examples include hardware BOM, device configuration, java code, and mobile app. Interesting projects with everything you need to try them.

[Watch it here...](#)

[Download here...](#)

[Download here...](#)

[Sign up on IoTize Cloud...](#)

[Try them here...](#)



Duetware Solution Features, Tools & Resources

Design Aids	Configuration Wizards Dashboard, MQTT, AWS cloud In Tap Manager	Java samples AES, I2C, MQTT, ADC, PWM, UART, SPI In IoTize Studio	Configuration samples STM32 (SWD), STM32 (S3P), Arduino (S3P), SPI, Modbus Sensor, SPI Sensor In IoTize Studio	Dashboard samples Sensor, Wattmeter, Chart, Check list, Table, Dynamic HTML, Cryptography In IoT App Creator	Reference designs CO2 meter, Switch timer, Access entry code, Thermostat, Wattmeter support.iotize.com
	Tap Toolbox Fieldbus connection utilities & testing Android & iOS Free App Store Play Store	Tap Manager No-code Tap configuration Android, iOS & Web app (PC) Free App Store Play Store iotize-cloud.web.app	IoTize Studio No/Low-code Tap configuration Windows (PC) Free iotize.com	IoT App Creator No/Low-code dashboard design Web app (PC) Subscription iotize-cloud.web.app	Ride7 / RKit-JVM Java code debugger Windows (PC) Free raisonance.com
DUETWARE	NFC 3-Stroke Configuration Secure pairing (BLE, Wi-Fi)	Bluetooth (BLE) Device-to-mobile comm.	Wi-Fi Device-to-mobile comm. WAN	LoRa Module or Tapioca HW extension	LTE & NB-IOT Tapioca HW extension
	lwM2M	JVM	SCRAM	SSL	MQTT
	FUOTA	JSON	Access profile management	Certificate management	CoAP
	SWD	SPI	USB	Modbus RTU / TCP	TCP / IP
	S3P	I2C	RS232	RS485	Ethernet
	UART	GPIO	CAN		
Board Support & Evaluation	For Cortex M MCU SWD & S3P Library TapNLink PRIMER	For Arduino Ard-Tap Library (S3P) TapNLink PRIMER	For Other MCU S3P Library TapNLink PRIMER	For Modbus devices / systems Native Modbus RTU & TCP Tapioca TapNPass TapBus	www.iotize.com
	<i>IoTize is a patented technology of IoTize SAS. Patent No. 14/54445.</i>				



Thank you!

Questions



Annex Slides – Use Cases

1. Commissioning & Configuration

- Mobile app
- Near Field Communication

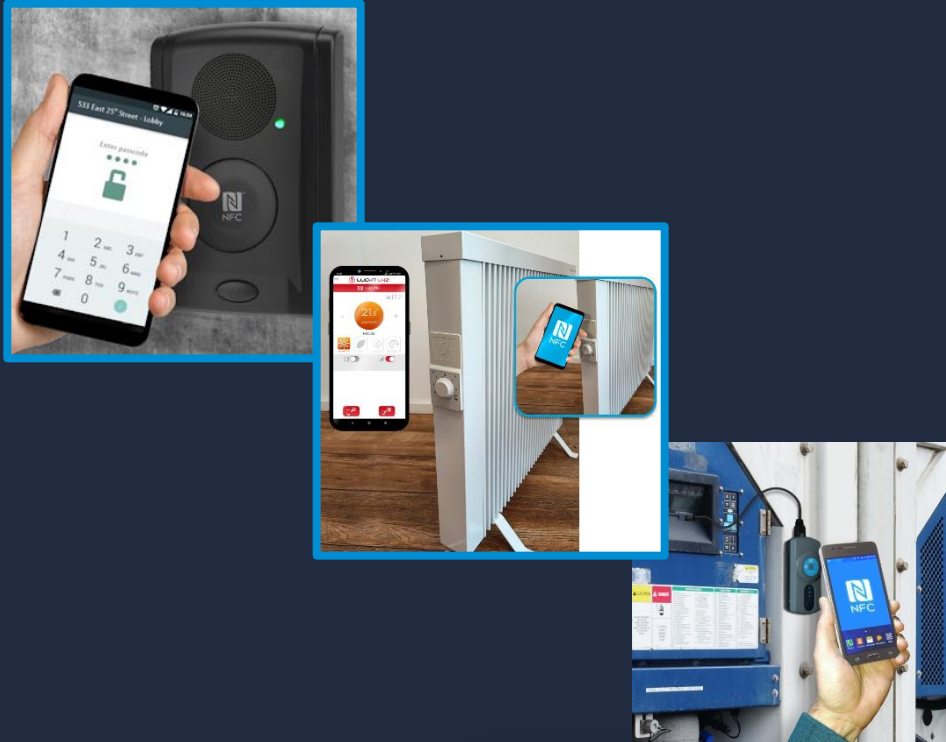
2. Diagnostic Monitoring

- Mobile app
- Bluetooth, or Wi-Fi

3. Remote Monitoring

- Cloud platform & Mobile app
- Wi-Fi, LoRa / LTE-M / NB-IOT





Needs...

- *Short, Repeated Transactions with Equipment*
- *Collection and/or Update of Parameters*
- *Secure & Sure Connection*
- *Visibility of Parameter Modifications*
- *Record of Configurations & Interventions*

Duet Mobile Solution...

- *NFC Tap-to-Connect is Secure & Sure*
- *Better Visibility & Navigation of Parameters*
- *Stored Record of Configurations, Interventions*
- *Blocked? Get Help Directly Via the Mobile.*



WiFi





WiFi



Needs...

- *Extended, Live Interaction with Equipment*
- *Secure & Sure Connection*
- *Visibility of Parameters, Test Results & Flags*
- *Remote Operation for Safety & Comfort*
- *Record of Results & Interventions*

Duet Mobile Solution...

- *NFC Tap-to-Pair is Secure & Sure*
- *Comfort of Extended Range*
- *Better Visibility & Navigation of Complex Data*
- *Stored Record of Results & Interventions*
- *Blocked? Get Help Directly Via the Mobile.*



WiFi or **LPWAN**

Needs...

- *Secure*
- *Visibility of Parameters & Status*
- *Adaptability to Infrastructure Evolutions*
- *Planning & Triggering of Actions or Interventions*
- *Record of Results & Interventions*

Duet Cloud Solution...

- *Layered Encryption & Configurable Access Control*
- *(Re)Configurable Add-on, OTA Programmable*
- *Visualization & Controls based-on Configuration*
- *MQTT Adapts Easily to Any Service Platform*



Annex Slides – Products

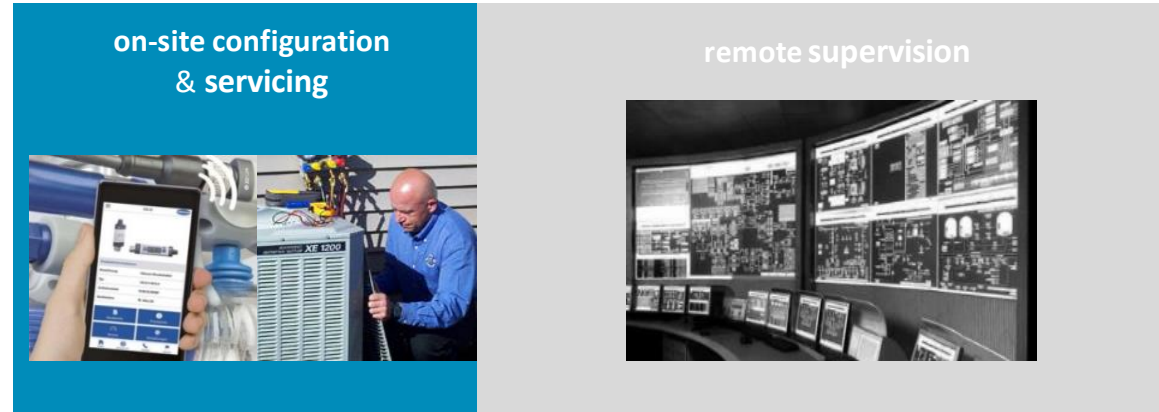


TapNLink Line with Duetware



Solution for original equipment designers & manufacturers

Connect directly to target CPU



	Available	Certified	NFC	BLE	Wi-Fi	LoRa	LTE	NB-IOT	...
TnL FIT203	Yes	Yes	X						
TnL FIR203	Yes	Yes	X	X					
TnL FIW103	Yes	Yes	X	X	X	X			
TnL FIL103	Preview	Yes	X	X*		X			



Solution for original equipment manufacturers, owners or service providers.

Retrofit on Modbus or Serial fieldbus.

on-site servicing



remote supervision



	Available	Certified	Power Supply	NFC	Bluetooth	Wi-Fi	LoRa	SigFox	...
TnP NSR103	Yes	Yes	Battery*	X	X				
TnP NSW103	Yes	Yes	Battery*	X		X			

Notes:

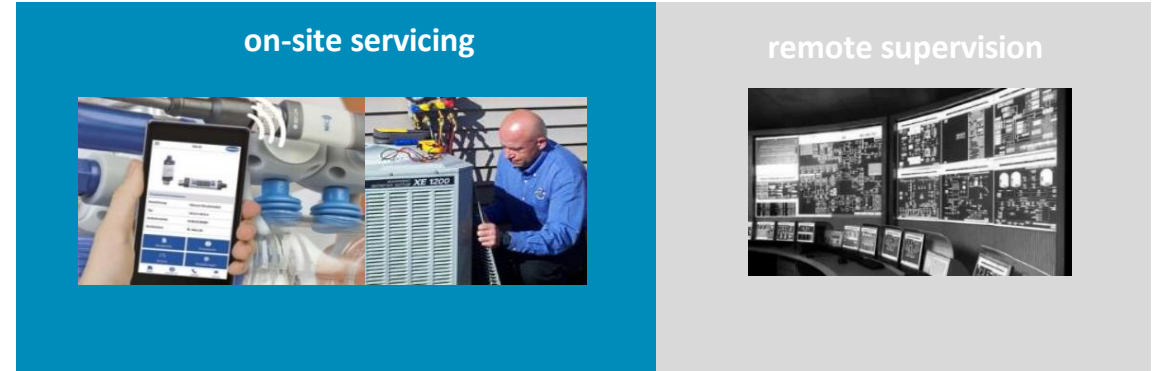
* Rechargeable Li ION battery.

** Powered from the target system.



Solution for original equipment manufacturers, owners or service providers.

Retrofit on Modbus or Serial fieldbus.



	Available	Certified	BUS	DIN ¹	IP67 ¹	NFC	Bluetooth	Wi-Fi	LoRa	LTE-M	NB-IOT
TpC xS0W123	Yes	Yes	USB	X	X	X	X	X			
TpC xS4W123	Yes	Yes	RS485	X	X	X	X	X			
TpC xSE0W123	Yes	Yes	Ethernet	X	X	X	X	X			
TpC xC0W123	Yes	Yes	RS485	X	X	X	X	X			
TpC PS4L113²	Yes	Yes	RS485		X	X	X		X		
TpC PS4M113²	Yes	Yes	RS485		X	X	X			X	X

Notes: 1. In the part number, replace "x" with "F" for the standard DIN rail casing or "P" for the protective IP67 casing. 2. LoRa, LTE-M and NB-IOT extensions are only available in IP67 casing.

TapBus Module Line with Duetware

Power Supply

with backup battery management

Analog

*16 Configurable Inputs
24-bit ADC
4-20 mA, 0-10V,
Pt100/Pt1000*

Logic

*12 Configurable Inputs
Digital or Counter (to 1kHz)
4 Configurable Outputs
Electronic switches (to 60V)*

No code, low code solution for building mobile and cloud connected industrial systems.

Duetware JVM for **easy creation of automated systems and integration with any cloud platform.**

- *Modbus (RS485, Ethernet)*
- *Automated addressing for easy configuration*
- *Optional Modbus+Power DIN rail*
- *Native NFC, BLE, Wi-Fi*
- *LoRa, LTE-M extension modules*
- *220 V AC / 24-36 V DC Power Input*
- *5 or 12 V Power Output*

Sampling in Q3 2023 !



TapNLink Primer NBW

- NFC, BLE, Wi-Fi
- HMI Proof-of-Concept in minutes
- Complete sample implementation
- Web apps (HTML5) or Native Hybrid (Cordova)
- Free configuration software
- Online app generator for APK
- Arduino ARD-Tap Library

\$49 USD (40 Euros)

